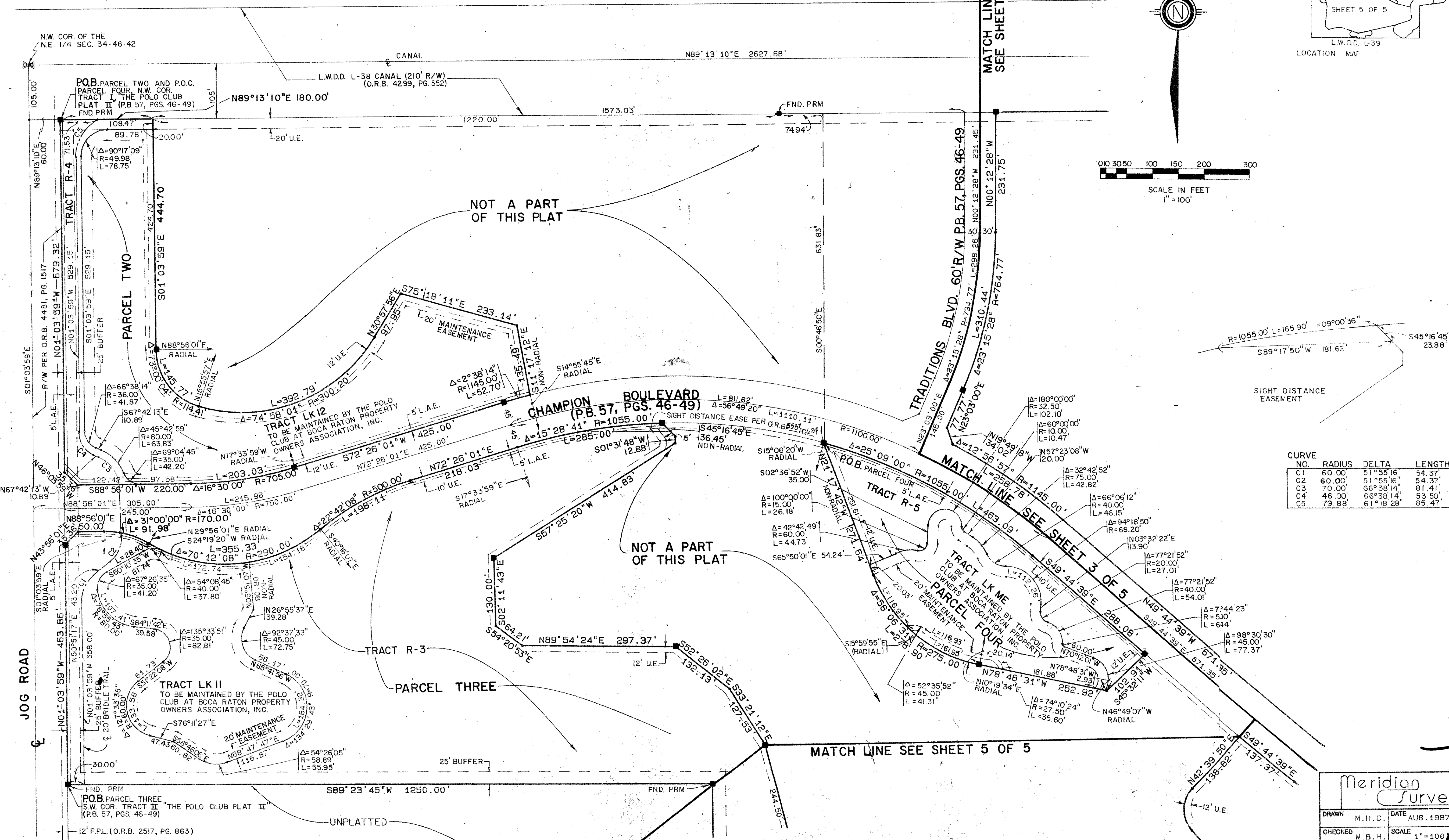
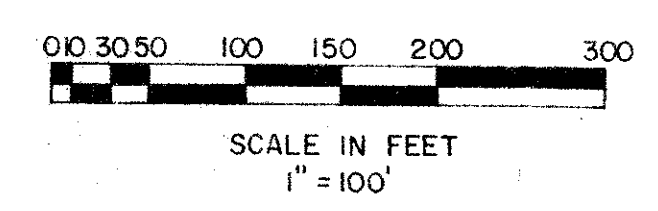
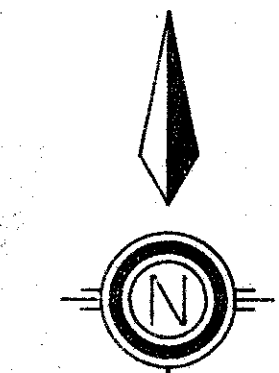
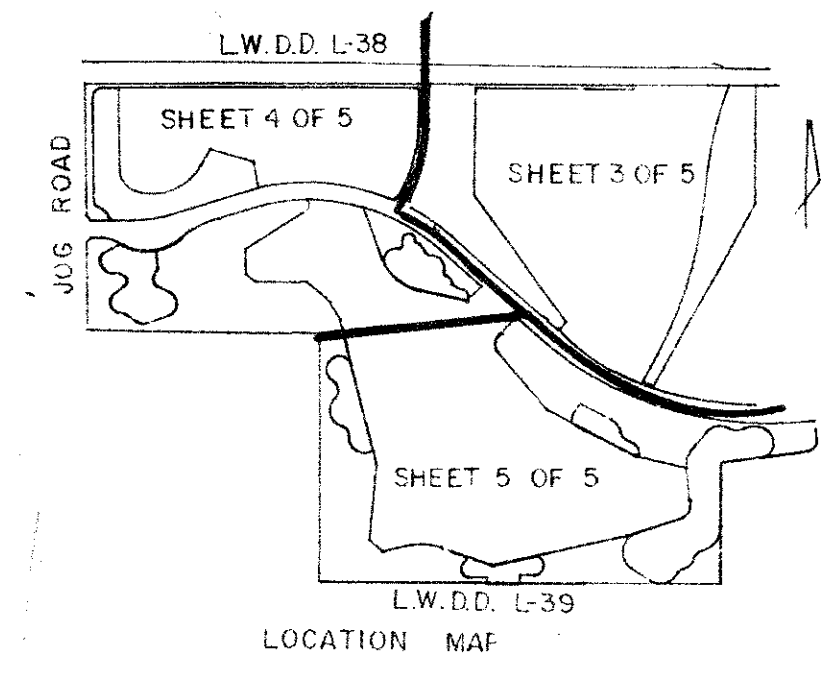


THE POLO CLUB OPEN SPACE PLAT FOUR

PART OF THE POLO CLUB P.U.D.
 SITUATE IN SECTIONS 34 AND 35, TOWNSHIP 46 SOUTH, RANGE 42 EAST
 PALM BEACH COUNTY, FLORIDA.
 BEING A REPLAT OF A PORTION OF TRACTS I, II & III OF "THE POLO CLUB PLAT II"
 1987 SHEET 4 OF 5

STATE OF FLORIDA
 COUNTY OF PALM BEACH
 THIS PLAT WAS FILED FOR
 RECORD _____
 THIS _____ DAY OF _____
 AD, 1988 AND DULY RECORDED
 IN PLAT BOOK _____ ON PAGES
 _____ AND _____
 JOHN B. DUNKLE, CLERK
 BY: _____, D.O.



CURVE NO.	RADIUS	DELTA	LENGTH
C1	60.00	51°55'16"	54.37'
C2	60.00	51°55'16"	54.37'
C3	70.00	66°38'14"	81.41'
C4	46.00	66°38'14"	53.50'
C5	79.88	61°18'28"	85.47'

SUBDIVISION # 7
 BOOK 59
 FLOOD MAP # 2208
 QUAD # 3
 ZONING # R/S
 SEPUD 84-71
 PUD NAME
 TAZ 602

0436-005
 59/11

Meridian Surveying and Mapping, Inc.
 2000 LOMBARD STREET WEST PALM BEACH, FL
 DRAWN M.H.C. DATE AUG. 1987
 CHECKED W.B.H. SCALE 1"=100'
 DRAWING NO. 86-P4-12
 THE POLO CLUB OPEN SPACE PLAT FOUR